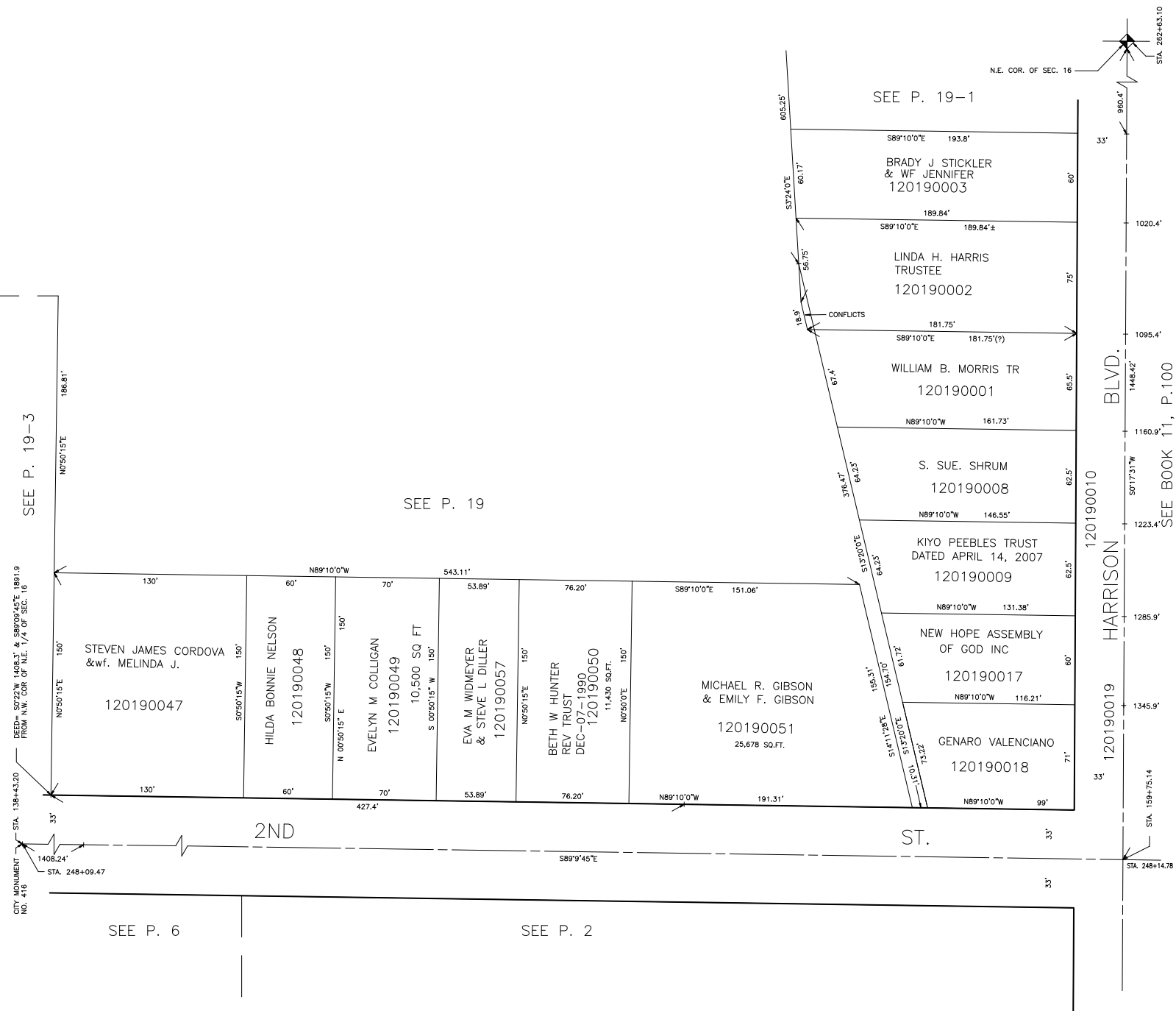


PART OF N.E. 1/4  
SECTION 16, T.6N.,R.1W., S.L.B.&M.

IN OGDEN CITY  
SCALE 1" = 50'

TAXING UNIT: 25

ALSO SEE P. 19-3



SEE P. 19-3

SEE P. 19

SEE P. 19-1

SEE P. 6

SEE P. 2

SEE BOOK 11, P. 100

CITY MONUMENT NO. 416  
 STA. 138+43.20  
 BEED-S0722'W 148R.3' & S89°09'45"E 1891.9  
 FROM N.H. COR OF N.E. 1/4 OF SEC. 16  
 STA. 248+09.47

STA. 158+75.14  
 STA. 248+14.78